

F1 in Schools Equipment

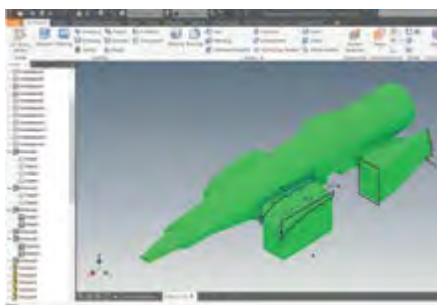
RACE EQUIPMENT & CONSUMABLES



As Proud Founder and Sponsor of F1 in Schools, Denford is delighted to be the official supplier of the latest F1 in Schools Race Equipment and Consumables.

The company has developed a complete range of cutting edge equipment, designed and manufactured in the UK by Denford, to support the F1 in Schools Challenge, including a lightweight, portable Race Track and a Start Gate with clear display and data storage. The Air Trace Visualisation System is also a valuable asset for aerodynamic capability analysis and for demonstrating this in the classroom.

This range of equipment was launched at the World Finals in Malaysia in 2017, where it proved to be a resounding success with the teams; and Denford continues to enhance and develop the equipment to meet the technological demands of competing students and to future-proof the F1 in Schools STEM Challenge.



DESIGN

AUTODESK

3D Design Software

Design your car using Autodesk® 3D Design Software. Autodesk and F1 in Schools have partnered to offer design tools to help prepare next-generation designers. Students and schools participating in F1 in Schools can access an extensive portfolio of Autodesk® 3D Design Software free of charge. To register for your software, please visit: www.f1inschools.com/software.html

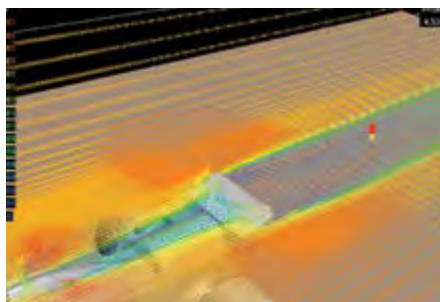


QuickCAM Pro

QuickCAM Pro provides the link between your 3D design software and the Denford range of CNC Routers. The latest release of QuickCAM Pro includes the new F1 Car Wizard, which simplifies the process of creating the CNC file to cut both sides of an F1 car.

Site Licence

BI01806P



ANALYSE

Virtual Wind Tunnel Software

F1 VWT Analysis Software Mk7

Single Seat

5 User Licence

Site Licence

BI01841

BI01841A

BI01841C



MAKE

CNC Machine Options for F1 Car Manufacture:

Compact 1000

Compact 1000 Pro (Metal Cutting)

Router 2600

Router 2600 Pro (Metal Cutting)

Router 6600

Router 6600 Pro (Metal Cutting)

MRC002000A

MRC003000

MRP002000

MRP003000

MRF002000

MRF003000



F1 in Schools Car Manufacturing Fixture

To enable the manufacture of Formula 1 Class cars. The fixture clamps directly to the T-slotted table on the Compact 1000/Pro, Router 2600/Pro and Router 6600/Pro and is also suitable for use on the VMC 1300 (it is necessary to remove the tool changer to fit the fixture)

NR1/0400UA



F1 Entry / Development Class Starter Kits

SOLO

1 x F1 Model Block Car Kit

1 x IsoSketch 3D Drawing Tool - single blister pack

F1DKIT01

TEAM

5 x F1 Model Block Car Kit

5 x IsoSketch 3D Drawing Tool - single blister pack

F1DKIT05

GROUP

10 x F1 Model Block Car Kit

1 x IsoSketch 3D Drawing Tool - class pack of 30

F1DKIT30



F1 Model Block (pack of 10)

This official F1 Model Block measures 223mm x 65mm x 50mm, with a consistent weight and density, and contains a pre-drilled hole for the CO2 Power Pack.

F1223/10

F1 in Schools Equipment

RACE EQUIPMENT & CONSUMABLES



MAKE

F1 Class Wheels

F1 Class Wheels - Black (pack of 100)

NX4531



F1 Model Block Car Kit

Includes 4 x F1 Class Wheels, 1 x Sandpaper, 2 x Screw Eyes, 2 x F1 Axles, 4 x Axle Bushes, 1 x F1 Model Block

N13226F1M01



Screw Eyes

Use these screw eyes to keep your car on the track
Screw Eyes (pack of 100)

N16020



F1 Axles

Use the strength of steel to mount your model wheels
F1 Axles - 66mm (pack of 100)

N16010



Axle Bushes

1/4" OD for use with F1 Axles (pack of 100)

NX4532



Paint Stand

The new, improved design holds your car during the painting process. The car is suspended by the cartridge hole and once in the stand, can be rotated to paint all sides

N54528

TEST



Air Trace Visualisation System

Includes Air Trace Visualisation Tunnel and Air Trace Smoke Generator with Air Trace Fluid

F1AT001000



**Air Trace Smoke Generator
(inc. 500ml bottle of Air Trace Fluid)**

Complete with Custom Polycarbonate Nozzle and 2 x Smoke Distribution Rake Attachments
Supplied in robust carry case

B106006

Air Trace Fluid (500ml bottle)

N56806

F1 in Schools Equipment

RACE EQUIPMENT & CONSUMABLES

RACE



F1 Race Track

23. 65 Metre-long Track (11 sections and 12 legs) with screen printed start and finish sections

F1RT001000B

Flight Case for F1 Race Track

F1RTFC



F1 Race Control System

For use with the F1 Race Track, the F1 Race Control System includes:

1 x F1 Start Gate, 1 x F1 Finish Gate with F1 branded wraps, 2 x F1 Start Boxes and 2 x F1 Start Triggers

F1RS001000B

Flight Case for F1 Race Control System

F1RSFC

Flight Case for F1 Race Control System & Sector Gate

F1RSFC-SG



F1 Race System Package

Includes:

1 x F1 Race Track with screen printed start and finish sections,
1 x F1 Race Control System with F1 branded wraps on Start and Finish Gates

PKFF1B



F1 Sector Gate Timing System

Additional Timing Gate for use with F1 Race Control System (not Stand Alone). The Sector time is recorded by the Race System and will allow car acceleration and deceleration graphs to be calculated.

Can only be used with the new F1 Race Track

F1RS003000



F1 Race Control System - Stand Alone

Stand Alone Race System can be used as a floor mounted Race System, or mounted on the old-style Track. Standard F1 Race Control System with additional Finish Sensor Gate and Cables to mount the Timing Sensors, with F1 branded wraps

F1RS002000B



F1 Start Box

Single Start Box for F1 Race Control System

F1RS/0400



Denford CO2 Power Packs

Denford CO2 Power Packs 8 gms (pack of 360)

F1CO2ST

Standard



Denford Race CO2 Power Packs

Denford CO2 Power Packs 8 gms (pack of 360)
(separately weighed to guarantee a race weight range of within 0.5 grams)

F1CO2CMP

Race



Car Deceleration System (for new F1 Race Track)

The car deceleration system consists of tapered brushes which gradually slow cars down after they have crossed the finishing line

F1CDS001001



F1 in Schools Track Banners (for new F1 Race Track)

Track Banners for use with F1 Race Track, featuring chequered flag borders, F1 in Schools logo and Denford logo

F1RTB