

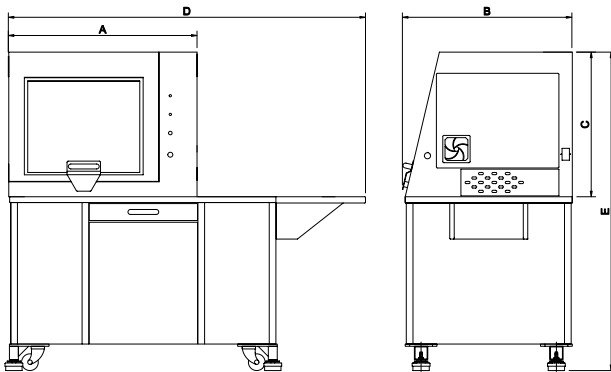
Compact 1000/1000 Pro

COMPACT 3 AXIS CNC ROUTER



**QUALITY, PRECISION,
MAINTENANCE FREE
ROUTING**
For full details - See page 11

Compact 1000 Pro shown with optional machine bench and computer support extension. (PC not included)



Machine Dimensions.

A compact 3 axis CNC Router with totally enclosed interlocking guard, suitable for all levels of education and training. The Compact 1000/1000 Pro is ideal for cutting a range of resistant materials such as hard and soft wood, plastic, modelling foam, acrylic and prototyping materials. In addition, the Compact 1000 Pro can cut non-ferrous metals.



APPROVED

Ideal for use in conjunction with



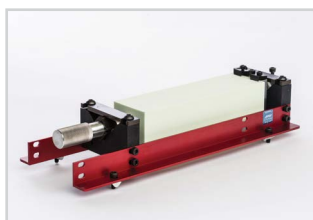
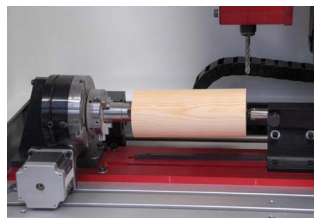
Compact 1000/1000 Pro

THE COMPACT 1000/1000 PRO COME AS STANDARD WITH:

- VR CNC Milling Operating Software (PC not included)
- QuickCAM 2D Design Software (1 seat)
- Aluminium T Slot Table
- Outlet for Dust Extraction System
- Workholding Clamps
- Installation and Instruction Manuals
- USB Connection

OPTIONAL EQUIPMENT INCLUDES:

Vacuum Pads, F1 in Schools Car Manufacturing Fixture, 4th Axis Programmable Rotary Fixture, 3D Scanning Attachment, Machine Bench and Dust Extraction Unit.



RECOMMENDED SYSTEM REQUIREMENTS

Please refer to page 27.

RECOMMENDED SOFTWARE PROGRAMS

All software necessary to control the Compact 1000/1000 Pro is included. Also included is a seat of QuickCAM 2D Design - an easy to use 2D CAD package.

- 2D Designs: The VR Milling software can import DXF, DWG, EPS and Gerber files in addition to G & M code programs and as such will link with programs such as Techsoft 2D Design and CorelDraw.
- 3D Designs: To enable import of STL files from 3D design packages, QuickCAM Pro software is required. (see pages 40 - 41).

MECHANICAL DETAILS	COMPACT 1000	COMPACT 1000 PRO
Machine Length (A)	875mm - 34.45in	
Machine Depth (B)	765mm - 30.12in	
Machine Height (C)	675mm - 26.57in	
Length with Optional Base (D)	1678mm - 66.06in	
Height with Optional Base (E)	1440mm - 56.69in	
Machine Weight	116kg - 255.74lb	
Machine Weight with Opt. Base	230kg - 507.06lb	
Table Size	400 x 240mm - 15.75 x 9.45in	
Travel X Axis	400mm - 15.75in	
Travel Y Axis	240mm - 9.45in	
Travel Z Axis	110mm - 4.33in	
Beam Clearance	140mm - 5.51in	
Max. Spindle Speed	29000rpm	24000rpm
Non-Ferrous Metal Cutting	No	Yes
Spindle Speed Control	No	Yes
Spindle Speed Override	No	Yes
Max. Feed Rate	5000mm/min - 196.85in/min	
Max. 3D Profiling	4500mm/min - 177.17in/min	
Spindle Motor 110V Supply	800W - 1.07HP	1.0kW - 1.34HP
Spindle Motor 230V Supply	530W - 0.71HP	
Axes Motors	Stepper	
Power Requirements	Single Phase, 230V - 8A / 110V - 10A	
Frequency	50/60 Hz	