

**DENFORD**

# Compact 1000 PRO

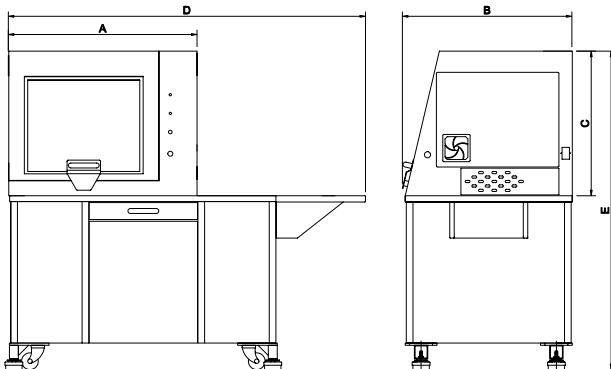
COMPACT METAL CUTTING 3 AXIS CNC ROUTER



**QUALITY, PRECISION,  
MAINTENANCE FREE  
ROUTING**

For full details - See page 9

Shown with optional universal bench and  
computer support extension.  
(PC not included)



Machine Dimensions.

A compact 3 axis CNC Router with totally enclosed interlocking guard, suitable for all levels of education and training. The Compact 1000 Pro is ideal for cutting a range of resistant materials such as hard and soft wood, plastic, modelling foam, acrylic and prototyping materials, as well as non-ferrous metals.

**CE**  
APPROVED

Ideal for use in conjunction with

**IN SCHOOLS**

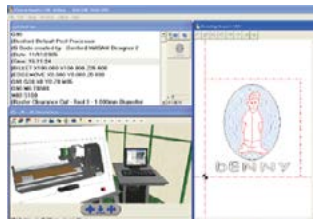
## Compact 1000 PRO

### THE COMPACT 1000 PRO COMES AS STANDARD WITH:

- VR CNC Milling Operating Software (PC not included).
- QuickCAM 2D Design software (1 seat)
- Aluminium T Slot Table.
- Outlet for Dust Extraction System.
- Workholding Clamps.
- Installation and Instruction Manuals.
- USB Connection.

### OPTIONAL EQUIPMENT INCLUDES:

Vacuum Pads, F1 in Schools Car Manufacturing Fixture, 4th Axis Programmable Rotary Fixture, 3D Scanning Attachment, Universal Machine Bench and Dust Extraction Unit.



### SYSTEM REQUIREMENTS

Please refer to page 29.

### RECOMMENDED SOFTWARE PROGRAMS

All software necessary to control the Compact 1000 Pro is included. Also included is a seat of QuickCAM 2D Design - an easy to use 2D CAD package.

• 2D Designs: The VR Milling software can import DXF, DWG, EPS and Gerber files in addition to G & M code programs and as such will link with programs such as Techsoft 2D Design and CorelDraw.

• 3D Designs: To enable import of STL files from 3D design packages such as Autodesk Inventor, SolidWorks, Pro/DESKTOP & ArtCAM, QuickCAM Pro software is required (see pages 40 - 41).

| MECHANICAL DETAILS  | COMPACT 1000 PRO |
|---|------------------|
| Machine Length (A)  | 875mm            |
| Machine Depth (B)   | 765mm            |
| Machine Height (C)  | 675mm            |
| Length with Optional Base (D)   | 1678mm           |
| Height with Optional Base (E)   | 1440mm           |
| Machine Weight  | 116kg            |
| Machine Weight with Opt. Base   | 230kg            |
| Table Size  | 400 x 240mm      |
| Travel X Axis   | 400mm            |
| Travel Y Axis   | 240mm            |
| Travel Z Axis   | 110mm            |
| Beam Clearance  | 140mm            |
| Max. Spindle Speed  | 24000rpm         |
| Non-Ferrous Metal Cutting   | Yes              |
| Spindle Speed Control   | Yes              |
| Spindle Speed Override  | Yes              |
| Max. Feed Rate  | 5000mm/min       |
| Max. 3D Profiling   | 4500mm/min       |
| Mains Supply Requirements*<br>[* Alternative supplies available on request] | Single Phase     |
| Spindle Motor   | 1.0kW            |
| Axes Motors   | Stepper          |
| Volts   | 230VAC           |
| Amps  | 8 Amps           |
| Hz  | 50 Hz            |
| Electric Connection   | 13 A Socket      |