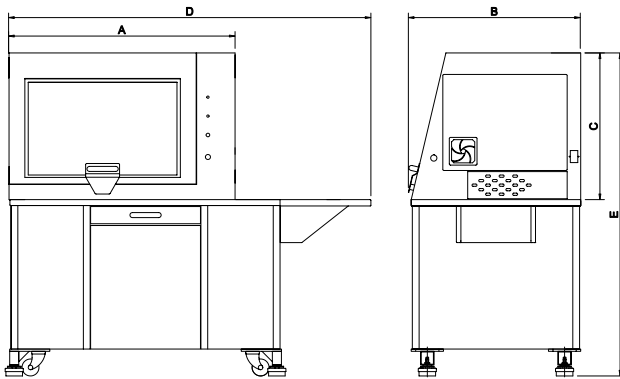


Turn 270 Pro

CNC LATHE



Turn 270 Pro shown with optional machine bench and computer support extension. (PC not included)



Machine Dimensions.

A compact 2 axis CNC Lathe with totally enclosed high-visibility interlocking guard, suitable for all levels of education and training. Programmable spindle speeds and feedrates make the Turn 270 Pro ideal for cutting a range of resistant materials such as wax, plastic, acrylic, free cutting alloys, aluminum and steel.



Turn 270 Pro

THE TURN 270 PRO COMES AS STANDARD WITH:

- VR CNC Turning Operating Software (PC not included)
- QuickTURN 2D Design Software (1 seat)
- Quick Change Toolpost and Holder
- Manual Self Centring 100mm 3 Jaw Chuck
- Installation and Instruction Manuals
- USB Connection

RECOMMENDED SYSTEM REQUIREMENTS

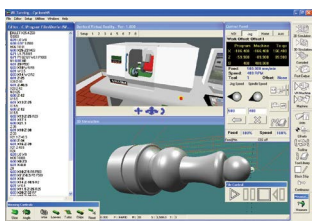
- 1 GHz Processor,
- 1 GB Memory,
- 32 GB Hard Disk,
- Microsoft Windows 7, 8 & 10,
- OpenGL Graphics Card, or built in Graphics,
- to support a minimum 1024 x 768 Screen Resolution,
- CNC machines require USB Connection.

RECOMMENDED SOFTWARE PROGRAMS

All software necessary to control the Turn 270 Pro is included. Also included is a seat of QuickTURN 2D Design - an easy to use CAD package.

OPTIONAL EQUIPMENT INCLUDES:

Comprehensive Tooling Package, 8 Station Programmable Turret, Pneumatic Chuck and Guard, Spray Mist Coolant, Automatic Lubrication System, Tail Stock, and Machine Bench.



MECHANICAL DETAILS	TURN 270 PRO
Machine Length (A)	1000mm - 39.37in
Machine Depth (B)	768mm - 30.24in
Machine Height Bench Mounting (C)	675mm - 26.57in
Length with Optional Base (D)	1665mm - 65.55in
Height with Optional Base (E)	1440mm - 56.69in
Machine Weight	140kg - 308.65lb
Machine Weight with Optional Base	255kg - 562.18lb
Swing Over Bed	190mm - 7.48in
Swing Over Cross Slide	100mm - 3.94in
Distance Between Centres	270mm - 10.63in
Travel X Axis	150mm - 5.91in
Travel Z Axis	225mm - 8.86in
Max. Spindle Speed	4000rpm
Max. Feed Rate	3000mm/min - 118.11in/min
Spindle Bore	26mm - 1.02in
Spindle Motor	1.5kW - 2.01HP
Axes Motors	Stepper
Power Requirements	Single Phase, 230V - 8A / 110V - 10A
Frequency	50/60 Hz